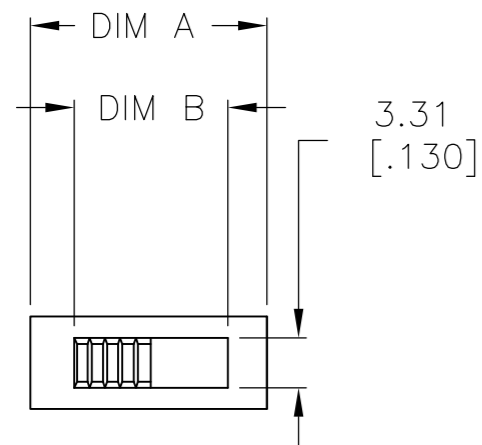


THIS DRAWING IS UNPUBLISHED. RELEASED FOR PUBLICATION
 © COPYRIGHT - By - ALL RIGHTS RESERVED.

LOC	DIST	REVISIONS			
P	LTR	DESCRIPTION	DATE	DWN	APVD
AD	00				
	A2	REVISED PER ECO-11-004820	11MAR11	RK	HMR



SPECIFICATIONS:
 MAKE-BEFORE-BREAK

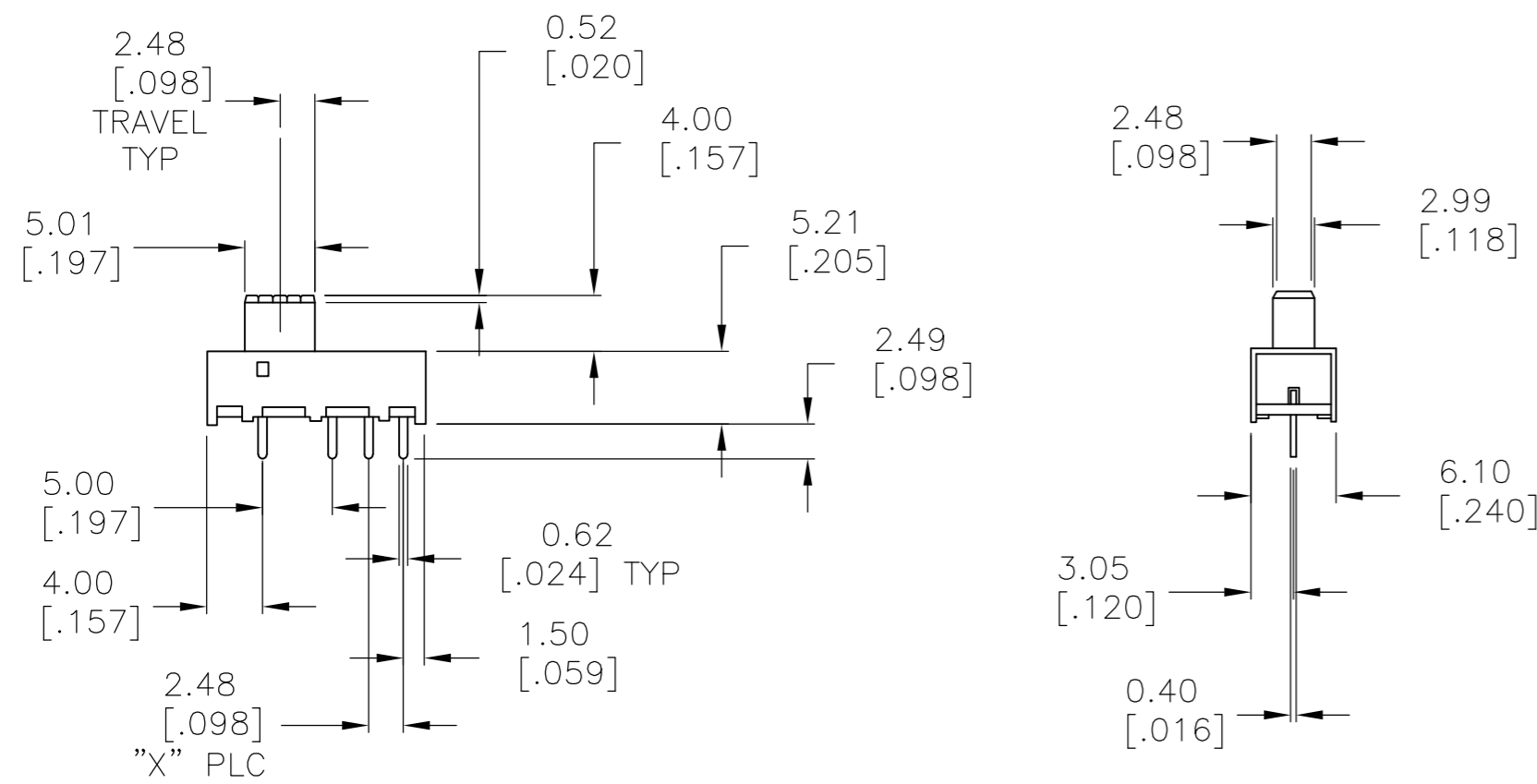
MATERIALS:
 FRAME: STEEL, ZINC PLATE
 ACTUATOR: POM UL94HB, BLACK
 FIXED CONTACT/TERMINAL: COPPER ALLOY, SILVER OVER NICKEL PLATE
 MOVING CONTACT: COPPER ALLOY, SILVER CLAD
 COIL SPRING: TEMPERED STEEL WIRE
 BALL- TEMPERED CARBON STEEL
 TERMINAL BOARD: PHENOLIC, UL94HB
 TERMINAL SEAL: EPOXY

ELECTRICAL:
 CONTACT RATING: 250 MILLIAMPS@125V AC
 CONTACT RESISTANCE: 30 MILLIOHMS MAX (INITIAL), 60 MILLIOHMS AFTER TEST
 INSULATION RESISTANCE: 500 MEGOHMS MIN AT 500V DC
 DIELECTRIC STRENGTH: 500 VAC RMS AT SEA LEVEL
 LIFE EXPECTANCY: 10,000 CYCLES MIN. NO LOAD

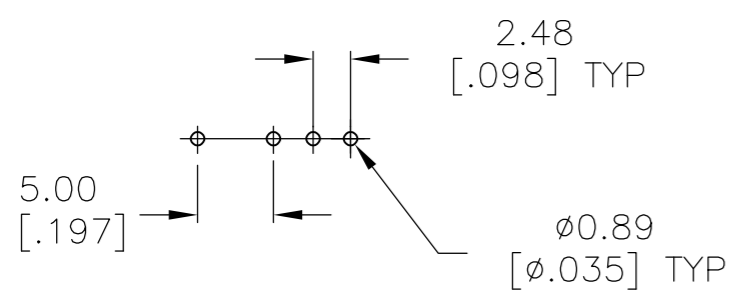
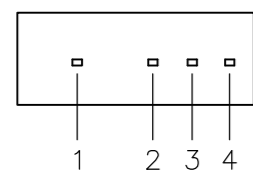
MECHANICAL:
 ACTUATION FORCE: 250 +150/-100 GRAMS
 TRAVEL: 2.49 (.098)

ENVIRONMENTAL:
 OPERATING TEMPERATURE: -10° TO +60°C
 STORAGE TEMPERATURE: -10° TO +60°C
 RESISTANCE TO SOLDER HEAT: 260°C FOR 10 SEC PER 109-202, COND. B
 SOLDERABILITY: PER EIA-364-56A, PROCEDURE 3, COND. B

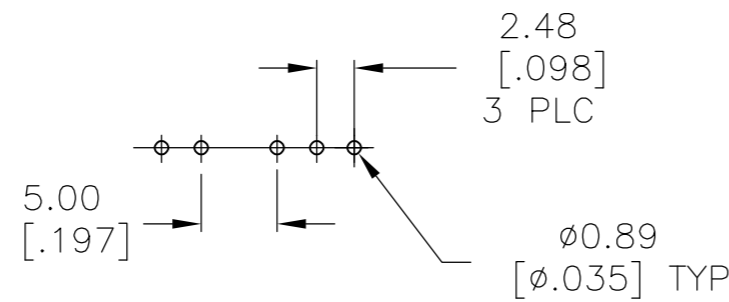
- NOTES:
- ALL MATERIALS AND FINISHES SHALL COMPLY WITH EU DIRECTIVE 2002/95/EC OF 27JAN2003 (ROHS)
 - ALL PERFORMANCE SPECIFICATIONS WERE TESTED IN ACCORDANCE WITH JIS-C-5441 UNLESS OTHERWISE STATED.



1825161-1 AS SHOWN



P.C. HOLE LAYOUT (1825161-1)



P.C. HOLE LAYOUT (1825161-2)

1-3	2-3	3-4	3-5	-	-	-		3	12.50[.492]	18.01[.709]	SP4T	STS1400PC04	1825161-2
-	-	-	-	1-2	2-3	2-4		2	10.01[.394]	15.50[.610]	SP3T	STS1300PC04	1825161-1
							BOTTOM VIEW	X PLC	DIM B	DIM A	FUNCTION	T&B P/N	P/N
FUNCTION DIAGRAM													

THIS DRAWING IS A CONTROLLED DOCUMENT.

DIMENSIONS: mm [INCHES]	TOLERANCES UNLESS OTHERWISE SPECIFIED: 0 PLC ± - 1 PLC ± - 2 PLC ± 0.20[.008] 3 PLC ± - 4 PLC ± - ANGLES ± -	FINISH	WEIGHT	SCALE	SHEET	REV
-	-	-	-	A2	1 of 1	A2

APPROVED: B.S.VISWESWARA
 CHECKED: M.S.SARVER
 DRAWN: -
 PRODUCT SPEC: -
 APPLICATION SPEC: -

TE Connectivity
 SLIDE SWITCH,
 STS1300PC & STS1400PC SERIES

SIZE: A2 CAGE CODE: 00779 DRAWING NO: 1825161 RESTRICTED TO: -
 CUSTOMER DRAWING SCALE: 2:1 SHEET: 1 of 1 REV: A2