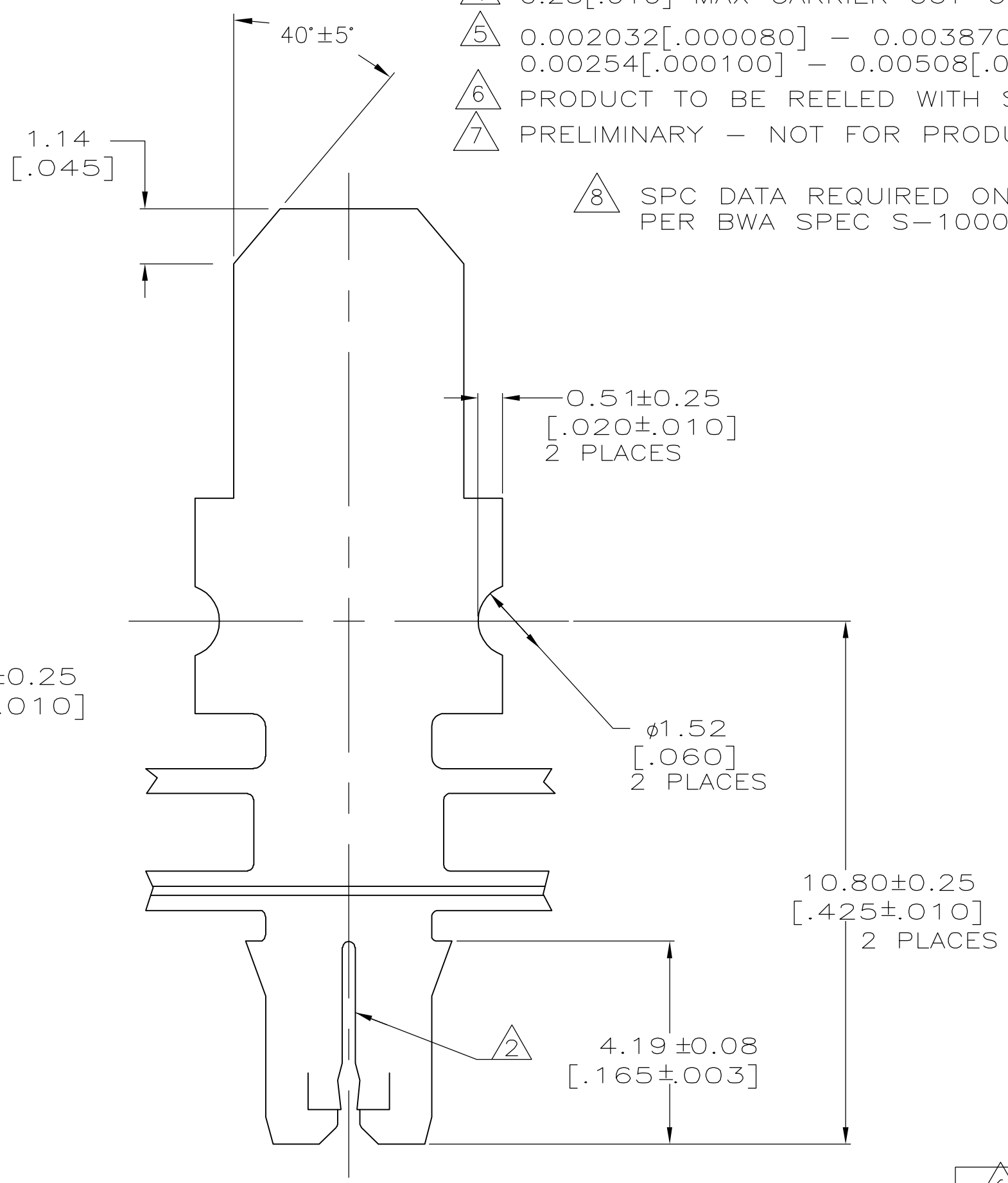
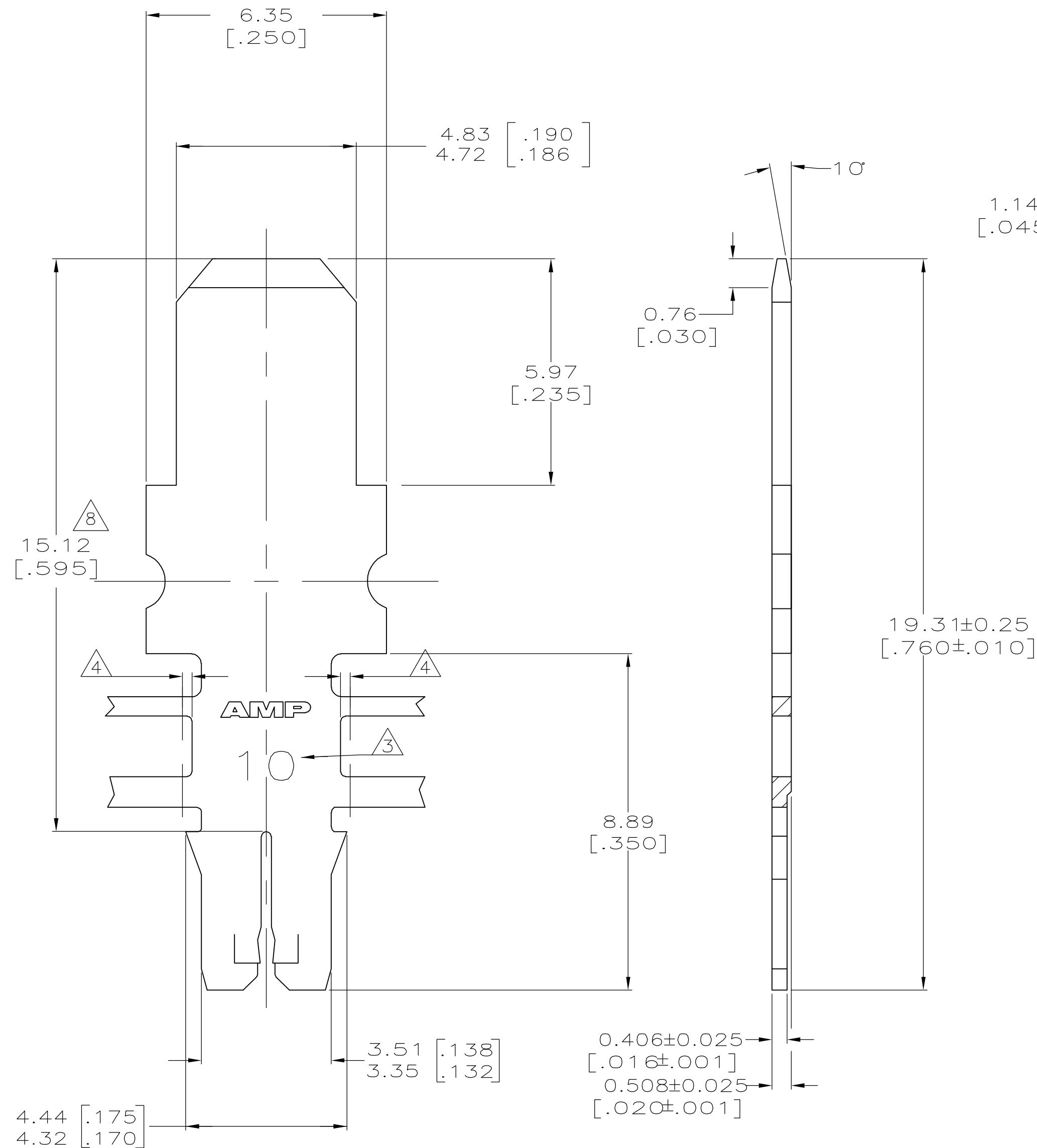


THIS DRAWING IS UNPUBLISHED. RELEASED FOR PUBLICATION
 © COPYRIGHT BY TYCO ELECTRONICS CORPORATION. ALL RIGHTS RESERVED.

LOC		DIST		REVISIONS			
P	LTR	DESCRIPTION		DATE	DWN	APVD	
	H2	REVISED PER ECR-05-011734		03NOV05	JR	KR	

- 1 CONTINUOUS STRIP ON REELS WITH TERMINALS LOCATED ON 6.86±0.08 [.270±.003] CENTERS
- ② SLOT ACCEPTS 0.36-0.51mm [#27-#24] AWG COPPER MAGNET WIRE. TWO WIRES OF THE SAME SIZE MAX PER SLOT
- ③ IDENTIFICATION NUMBER 10 FOR THE MAGNET WIRE SLOT SIZE
- ④ 0.25[.010] MAX CARRIER CUT-OFF TABS
- ⑤ 0.002032[.000080] - 0.003870[.000150] TIN PLATE OVER 0.00254[.000100] - 0.00508[.000200] COPPER UNDERPLATE.
- ⑥ PRODUCT TO BE REELED WITH SPECIAL PAPER TRAILER
- ⑦ PRELIMINARY - NOT FOR PRODUCTION
- ⑧ SPC DATA REQUIRED ON THIS DIMENSION PER BWA SPEC S-1000.



⑥ REVERSE	⑦ 1217497-4
⑥ STANDARD	⑦ 1217497-3
REVERSE	1217497-2
STANDARD	1217497-1
REELING	PART NUMBER

THIS DRAWING IS A CONTROLLED DOCUMENT.		DWN	27SEP2000	Tyco Electronics Corporation Harrisburg, Pa 17105-3608
DIMENSIONS: mm		CHK	27SEP2000	
TOLERANCES UNLESS OTHERWISE SPECIFIED:		APVD	27SEP2000	
0 PLC ± - 1 PLC ± - 2 PLC ± 0.13[.005] 3 PLC ± - 4 PLC ± - ANGLES ± - FINISH ⑤		KURT A. RANDOLPH KURT A. RANDOLPH KURT A. RANDOLPH	PRODUCT SPEC 108-1484 APPLICATION SPEC 114-2140	
MATERIAL	T2 PRE-MILLED	WEIGHT	-	NAME TAB, 4.75[.187] SERIES, MAG-MATE Slim Line
CUSTOMER DRAWING		SCALE	10:1	SIZE CAGE CODE DRAWING NO RESTRICTED TO A2 00779 C=1217497 -
		SHEET	1 OF 1	REV H2